
[URGENT] Confirmation needed for your manuscript PNB056 in IJCST 2016

3 messages

admin bisstech <bisstech2016@gmail.com>
To: nyomansuamir@pnb.ac.id

Wed, Sep 20, 2017 at 4:39 PM

Dear Mr. Suamir,

Following a remark from ASL Typesetting Manager regarding your manuscript IJCST 121, according to our new coding system, it was noted that your manuscript might be using copyrighted tables.

In the caption of Table 1 (notes in page 9), you cited a reference. ASL would like to confirm if the table is a copyrighted one or not. If it is a previously printed table, ASL asks you to replace it with the original one.

Please find your manuscript in the attachment and send the revised manuscript back to us by tomorrow (Thursday, Sept 21).

Thank you for your cooperation.

Best Regards,
IJCST 2016 Committee

 **Copy of IJCST 121.docx**
170K

Suamir Nyoman Suamir <nyomansuamir@pnb.ac.id>
To: admin bisstech <bisstech2016@gmail.com>

Fri, Sep 22, 2017 at 4:45 PM

Dear IJCST 2016 Committee,

I do apologize for my late response due to I was in a village without internet access and my laptop in the last two days.

I can confirm that the table (Table 1) is not a copyrighted one. The table was established by myself based on results of the investigation. The reference is just for the number that was used for calculation of the CO2 emissions (as table legend which placed under the table). I have moved the legend with reference into the text.

Please kindly find the modified manuscript in the attachment.

Thank you for your corrections.
I hope this reply is not too late.

My best regards
Suamir

[Quoted text hidden]

--

Dr. I Nyoman Suamir
Lecturer and Researcher
Mechanical Engineering Department
Bali State Polytechnic
Jl. Kampus Bukit Jimbaran
Kuta Selatan
Bali 80364
Indonesia

 **Copy of IJCST 121-rev.docx**
173K

admin bisstech <bisstech2016@gmail.com>
To: Suamir Nyoman Suamir <nyomansuamir@pnb.ac.id>

Fri, Sep 22, 2017 at 5:25 PM

Dear Mr. Suamir,

Thank you, we have received both your revised manuscripts.

Best Regards,
IJCST 2016 Committee

[Quoted text hidden]

Response to Reviewer Comments:

Paper Title:

Waste Heat Recovery from Central AC System for Hot Water Supply; a Case Study for Hotel Building Application in Indonesia

Main author: I Nyoman Suamir

Reviewer:

Comment: Good

Response:

Thank you very much for the review and a very brief comment. We really appreciate that our article can be considered for publication in this journal.

AMERICAN
SCIENTIFIC
PUBLISHERS

Copyright © 2017 American Scientific Publishers
All rights reserved
Printed in the United States of America

Advanced Science Letters
Vol. XXXXXXXXX

Waste Heat Recovery from Central AC System for Hot Water Supply; a Case Study for Hotel Building Application in Indonesia

I Nyoman Suamir^{1,*}, I Nengah Ardita¹, I Wayan Temaja¹

¹Mechanical Engineering Department, Politeknik Negeri Bali, Jl. Kampus Bukit Jimbaran, Kuta Selatan, Badung, Bali, Indonesia 80364

GOOD

This paper studied integration of heat pump and air conditioning systems to provide heating for hot water as well as cooling for hotel services based on weather conditions and energy costs in Indonesia. The paper also analyzed environmental impact and investigated economical aspect of such system in comparison with conventional technology consisting separate hot water boiler and air conditioning system. The study was conducted for a five star hotel of 636 rooms, 30 apartments and 25 meeting rooms. The results showed that optimum arrangement of the integration could reduce 36.7% energy consumption for space cooling and hot water supply. This accounted for about 6.6% of total energy use of the hotel. The investigated system was found to be economically viable for hotel application with energy cost reduction for air conditioning and hot water supply systems of 34.4%. The system could also provide reduction on the environmental impact.

Keywords: heat recovery, air conditioning system, energy use, energy efficiency, environmental impact and hotel building

1. INTRODUCTION

Indonesia, as one of tropical countries, has high potential impact on environment. Greenhouse gases emissions of the country in 2012 have reached 540 million tons CO₂ equivalent with a projection of emissions in 2035 of about 2,223 million tons. Three largest emitter sectors are power plant, industry, and transport with total GHG emissions of 1402, 772, and 631 million ton CO₂e respectively. Most of the country potential impact was resulted from non-renewable energy consumption especially from fossil fuels such as crude oil, natural gas and coal¹.

In commercial sector, energy consumption of the country was 3.7% of national energy use². The sector includes office buildings, hospitals, hotels, supermarkets and airports. The energy consumption growth of the sector was the second highest just after transportation with consumption growth of 4.58% per year³.

Energy saving potential of the commercial sector was estimated to be ranging from 10% up to 30% and energy saving target of the sector in 2025 was estimated to be 15%⁴. For hotel building, the growth of the buildings in past three years reached an average of 11.2%⁵. This would consequently increase the energy consumption of the sector.

Hotel buildings are therefore one of the most energy intensive building types due to their multi-usage functions and 24 hours operation per day and consume substantial amount of energy⁶. Energy use intensity (EUI) for hotels especially in Indonesia is relatively high. Preliminary observation of four-star hotel in Jakarta showed that EUI of the hotel was about 495 kWh/m²/year in 2013⁷. For comparison, EUIs of hotel buildings in some countries such as UK, New Zealand, Taiwan, Hong Kong, China and Turkey are respectively 368, 159, 295, 342, 165 and 389 kWh/m²/year⁸⁻¹¹. Most of the energy source is from electricity with 91.7% energy share and LPG (liquid petroleum gas) of 7.8% mainly for hot water production. The hotel also consumed diesel fuel for local electricity generation of about 0.5%⁷. For hotels in Singapore,

*Email address: nyomansuamir@pnb.ac.id

electricity is also the main energy source, with a proportion of 91% for hotels that only use electricity and gas. For other hotels that also consume diesel fuel for hot water or steam generation, the percentage of electricity drops to 77%^{12,13}. This energy consumption contributes to a hotel's operating cost. It generally accounts for between 4% and 10% of total running costs or even falls in the range of 20%-25% for luxury hotels^{14,15}.

For hot and humid climates, hotel buildings typically have the largest energy consumption in cooling within the range of 35%-50% and hot water usage between 7%-18% of total energy consumption¹⁵. For hotels in Indonesia, the demands of cooling and water heating are relatively stable all the year round. A preliminary study showed that cooling demand varied from 125 W/m² to 150 W/m², whilst heating demand especially for domestic hot water system was about 6% - 12% of the cooling demand⁷.

In addition, a study on energy consumption of air conditioning systems in hotel buildings was reported by Barry *et al*^{16,17}. The study was found that air conditioning systems consumed the highest electrical energy among other hotels services. Thus improving energy efficiency of air conditioning and hot water systems would significantly contribute to energy conservation and certainly reduce operational cost of the hotel buildings. Reducing energy consumption would also contribute to decreasing environmental impact of the hotel buildings.

Many researchers have presented their works to maximize energy efficiency and to reduce energy use of the air conditioning and hot water supply systems. Hepbasli and Kalinci¹⁸ reviewed the utilization of heat through heat exchangers and modification of air conditioning and heat pump systems. This comprehensive review was very informative to researchers interested in energetic simulation, analysis, performance assessment and applications of various types of refrigeration based water heater systems.

A novel air-conditioning product that could achieve the multi-functions with improved energy performance has introduced by Ji *et al*¹⁹. It was reported that by incorporating a water heater in the outdoor unit of a split-type air-conditioner. The test system allowed space cooling and water heating could take place simultaneously, therefore, the energy performance could be raised considerably. The results showed that average coefficient of performance (COP) for space cooling and water heating was 4.02, while COP for space cooling only and water heating only were obtained 2.91 and 3.42 (at ambient temperature 31°C) respectively.

To date there has not been much research into optimization of air conditioning system through providing simultaneously space cooling and water heating for hotel industry applications. Hotel industry in tropical countries has cooling and water heating demand all the year round. Reuse of wasted heat from an air conditioning system for water heater production could improve energy

performance of the system and would reduce annual energy consumption of the hotel.

This paper presents theoretical and empirical investigation results of an energy conservation technology on air conditioning and hot water systems for hotel building applications by integrating a heat recovery system of central air conditioning system with an air source heat pump as system backup. The analyses covers reduction of energy consumption and economic viability of the arrangement compared with conventional system comprises separate air conditioning system and diesel fuel fired boiler. Environmental impact reduction of a such technology applied for hotel buildings is also presented.

2. METHODS AND INTEGRATION CONCEPT

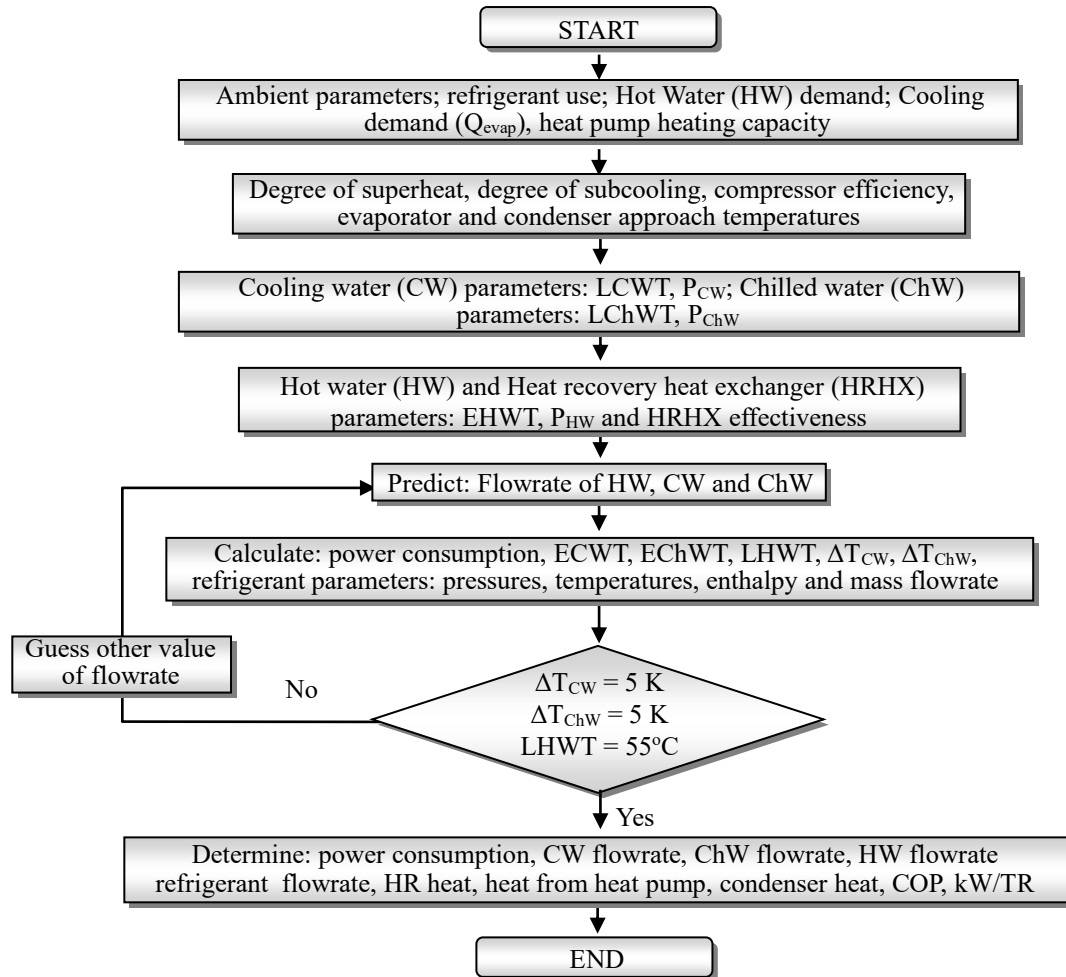
This research was based on experimental and numerical analyses of an integration of heat recovery system of a water-cooled chiller and heat pump. The integrated system was simulated to satisfy heating and cooling demands of a case study five-star hotel with 636 rooms, 30 apartments and 25 meeting rooms located in Bali Island - Indonesia. Experimental method was applied to obtain data from the existing air conditioning (AC) and heating systems of the hotel, while numerical analysis was used to simulate energy and temperature performance of the integrated system. Tests were conducted on the existing chiller system for five days continuously in order to obtain daily data of chiller performance and load factor variation of the chillers operation. Ambient temperature and relative humidity of the tests varied from 26°C to 31°C and from 76% to 88% RH respectively.

Variables to be investigated comprises dependant and independant variables. Dependant variables include energy consumption, cooling capacity and coefficient of performance (COP). Whilst independant variables consist of evaporator and condenser approach temperatures, evaporation and condensation temperatures of refrigerant respectively in evaporator and condenser, chilled and cooling water temperatures, ambient temperature, low and high system pressures, refrigerant flowrate, chilled and cooling water flow rate. The data obtained from experimental test together with data obtained from hotel record and manufacturers were processed simulated by using spreadsheet and *Engineering Equations Solver* programs²⁰. With these programs, energy and temperature performance of the integrated system can be investigated and simulated. The program can also be used to estimate the performance of the system at different operating conditions.

Figure 1 shows a flowchart of the EES models for integrated heat recovery AC system and heat pump. The model comprises one loop. The loop ensures that the energy balance in the condenser, evaporator and heat recovery heat exchanger (HRHX) can be satisfied. The loop determines flowrate of cooling water (CW), chilled water (ChW) and hot water (HW) at a given cooling duty of chiller which equals to hotel cooling demand. The

convergence of the loop is satisfied when the temperature differences of cooling and chilled water have reached 5 K and temperature of hot water exits the heat recovery heat exchanger of about 55°C. Once the convergence of the loop has been achieved, the power consumption of the compressor and fluid flowrate can be determined and its performance variables (HRHX heat, COP and kW/TR) can be calculated. The investigation analyses would cover

energy performance, environmental impact and economic viability of the integrated system. Energy performance analysis referred to ASHRAE²¹ and environmental analysis was based on BS EN 378-1²²; ASHRAE Standard-34²³ and IPCC²⁴. For economic viability analysis was applied price of energy and chiller system based on Indonesia price for the year 2015.



E = entering, L = leaving , P = pressure, T = temperature, ΔT = temperature difference, COP = coefficient of performance. TR = ton of refrigeration

Fig.1. Structure of the EES simulation models for integrated heat recovery AC system and heat pump

2.1 Existing AC and hot water supply systems

The hotel has one central plant for its air conditioning system which comprises two water cooled chillers. The schematic diagram of the air conditioning (AC) system can be seen in Figure 2. The chillers utilize centrifugal compressors with cooling capacity of 650 TR (ton of refrigeration) each. The chillers are using R-123 refrigerant. The hotel comprises 50,142 m² air conditioned floor area and 34,878 m² non-air conditioned. All hotel building is situated on 170.000 m² land area, therefore, hotel building services also spread over a very large area.

This caused the air conditioning system chosen for the hotel comprises two chilled water loops: primary and secondary loops. Chilled water is circulated throughout the system by primary and secondary pumps as shown in Figure 2.

Main part of the hot water system of the hotel is also placed in the central plant. The system consists of two diesel fuel fired boilers, steam distributor, calorifiers, hot water storages and distribution system. The boilers produce steam of capacity 3.2 ton per hour at 12 bars and 170°C. Boilers supply steam majority for laundry (of about 76%) and small part of 24% for hot water system.

The steam supplied to the hot water supply system is flowed to calorifiers to heat cold water of 27°C up to about 55°C. The hot water supply system is also completed with 30 m³ storage which can satisfy hot water demand during the night when the boiler to be shut off due to the laundry is closed. This method of operation can improve the efficiency of the hot water supply system.

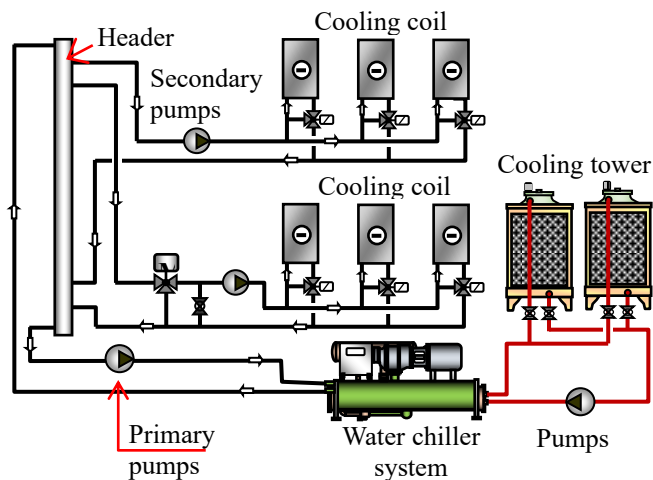


Fig. 2. Air conditioning system with water cooled chillers

2.2 Integration of AC system and heat pump

The integration of heat pump and air conditioning (AC) system can be seen in Figure 3. The integration system comprises water cooled chiller with heat recovery, heat pump and hot water supply systems. Main supply of the hot water is from the heat recovery system. Heat pump is used for back up when the heat recovered from the chiller cannot satisfy hot water demand especially during low load factor operation. The hot water supply is also stabilised by utilizing the existing 30 m³ hot water storage which can store the recovered heat during high part load chiller operation and supply the heat when the chiller operated at low load factor. This can also minimise the operation of heat pump and will reduce energy consumption of the hot water production. The calorifiers and boilers of the existing system are not employed in the integration system. The boilers are only used for laundry activities. The chillers applied for the integration system are two sets of 650 TR screw modular chillers with heat recovery to be integrated with 1 unit heat pump of 364 kW heating capacity for back up. Each set of modular chiller comprises 2x200TR modules and 1x250TR module. The chillers and heat pump use R-410A refrigerant specified for hot water production up to 55°C.

3. RESULTS AND DISCUSSION

Calculation results on energy use based on the data obtained from the hotel showed that facility services of the hotel use two energy types which include electricity and diesel fuel. Electricity is the main energy source accounting for 63.7% and consumption on diesel fuel of

about 36.3% of total energy use. Total energy consumption for facility services based on energy data 2012 and 2013 is 23,260 MWh/year. The electrical energy is mainly used for AC system, refrigeration, lighting and pumping system. Electrical energy consumption of the hotel was calculated to be 14,815 MWh/year. Energy use intensity (EUI) of the hotel calculated for two-year period 2012 and 2013 was to be 426.9 kWh/m²/year. This is still considered high compared with EUI of hotels in other countries as described previously in the introduction.

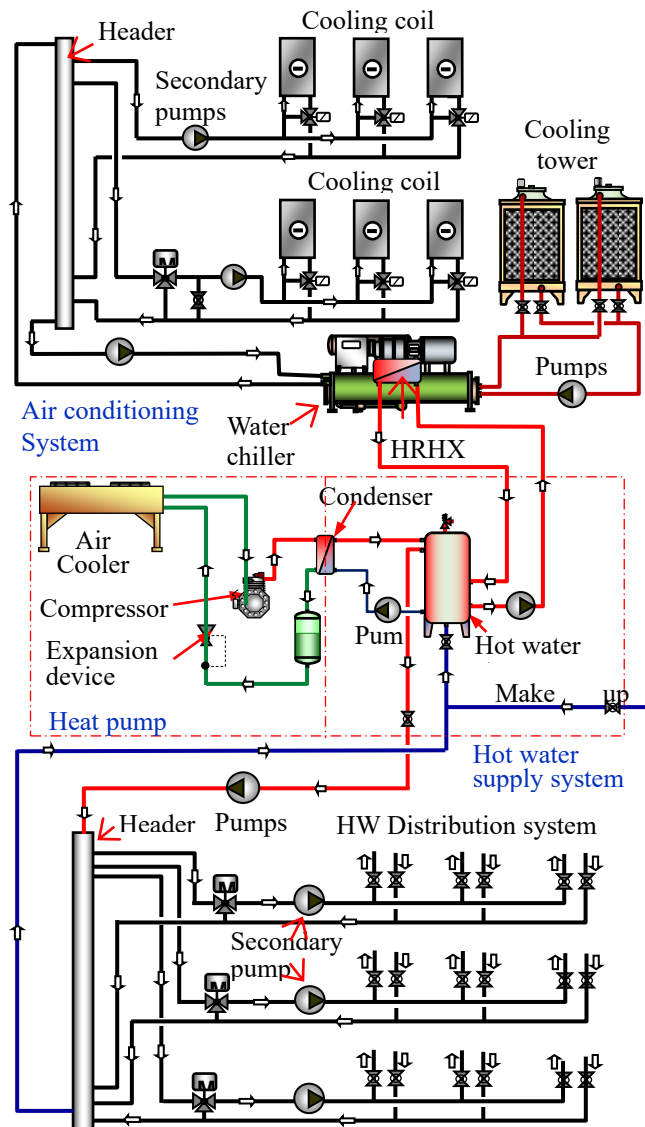


Fig. 3. Integration of heat recovery system and heat pump to satisfy space cooling and water heating demands

There is no data available for hot water use of the hotel. Then energy use for the existing hot water system was estimated using data from similar type of hotels in Indonesia which have data record for hot water supply system. Hot water demand of 55°C supply temperature is assumed to be 200 liters/room/day. Total rooms of the hotel including villas and apartment are 672 rooms. Then, it can be determined the hotel hot water demand of

134,400 litres/day with heat energy demand as high as 5,752,503 MJ/year. The heat energy demand was calculated based on makeup water temperature of 27°C. Assuming the efficiency of the boiler of 80%, diesel fuel energy for hot water supply was found to be 7,190,629 MJ/year or 1,998 MWh/year accounting for 23.65% of total diesel fuel energy of the hotel. The rest of diesel fuel energy is for laundry equipment.

Table 1 Summary of energy and environmental analyses of the integrated system

No	Parameters	Existing system	Integrated system
1	Energy Performance		
	Annual COP	5.99	5.20
	Annual efficiency (kW/TR)	0.59	0.68
	Annual part load (%)	64.12	64.12
	Annual electricity for Chiller (MWh)	2,173	2,486
	Annual electricity for HW from heat pump (MWh)	-	156
	Annual electricity (MWh)	2,173	2,642
	Annual diesel fuel for HW (MWh)	1,998	-
	Total annual energy (MWh)	4,171	2,642
2	Environmental Impact		
	Indirect impact (tonCO ₂ /year)	1,554	1,777
	Direct impact (tonCO ₂ /year)	7	129
	Indirect impact from diesel fuel (tonCO ₂ /year)	532	-
	Total impact (tonCO₂/year)	2,093	1,906
	ODP (ozone depleting potential)	0.02	0.00

COP = Coefficient of performance; TR = ton of refrigeration (12000 BTU/h); HW = hot water ; Carbon dioxide intensities for Indonesia electricity and diesel fuel were 0.715 and 0.267 kgCO₂/kWh respectively²⁴

Analysis results on the energy and environmental performance of the existing system as well as the integration system are shown in Table 1. In operation with the same annual load ratio, annual average COP and efficiency of the existing chillers are more favourable than the chillers of the integrated system (to be considered for cooling only). This is because of the existing system using centrifugal chillers, which commonly have better performance compared with screw type chillers. The results, however, also showed that total annual energy consumption of integration system is much lower of 36.7% than the existing air conditioning and hot water supply system. This reduction accounted for 6.6% of total energy use of the hotel and mainly due to very low energy used, if not free, for hot water production. For the integration system, the hot water was produced from wasted heat of the chillers through heat recovery heat exchangers. The simulation also showed that with 30 m³ hot water storage and the chillers operated in the range of investigated load factor, all of the hotel hot water demand can be satisfied by heat recovery system. The heat pump

would be in operation when the chillers run with very low load factor for a long time until the heat storage and heat recovery system could not cope with the heating demand. However, for this simulation, the heat pump was assumed to run 4 hours per day (from 5 a.m. up to 9 a.m.).

Table 1 also shows environmental impact of the existing system is higher about 10% than the integration system. The existing and integration systems are responsible for 2,093 and 1,906 tonCO₂/year respectively. Another downside of the existing system is that the chillers still use refrigerant R-123, which has ODP of 0.02. The phase out of this refrigerant for Indonesia will be in 2040. Time limitation is necessary to be considered when using refrigerant R-123.

Table 2 Summary of economic viability of integrated system

No	Parameters	Existing system	Integrated system
1	Cost components		
	Investment cost (MRp)	-	4,517.17
	Chiller operational cost (MRp/year)	2,689.22	3,132.24
	Hot water supply cost (MRp/year)	2,330.29	159.20
	Total operational cost (MRp/year)	5,019.51	3,291.44
2	Cost saving (MRp/year)		1,728.07
3	Payback period (years)		2.61

MRp = million rupiahs; Diesel fuel cost = Rp 11,600/litre or Rp 1,167/kWh; Electricity cost = Rp 1,237.5 (it has considered tax, peak and non peak hours and load cost); Rp = IDR (Indonesian rupiah)

Economic viability of the integration system in comparison with the existing system comprises separate air conditioning and diesel fuel fired boiler is shown in Table 2. From the table, it can be seen that the integrated system can provide considerably low payback period of *2.61 years with cost saving more than 1.7 billion rupiahs (IDR) per year*. As described previously, the heat pump system is mainly for backing up system. The simulation results actually showed that the heat recovery system of the chiller could satisfy the hotel heating demand. Considering this results if the hot water supply fully employs the heat recovery system (without heat pump), the cost component of heat pump can be omitted. Then the cost saving would increase up to more than *1.8 billion IDR per year with payback period of 1.48 years*.

The investigation on the economic viability also found that cost saving of the integrated system is dependent on energy efficiency of the system and cost ratio between diesel fuel and electrical energy. Cost saving will increase when cost ratio goes higher.

Other advantage of the integration system consisting modular chillers system is that the AC system can accommodate cooling load variation and can work at relatively stable performance although at low load factor. The integrated system, however, has also drawback as its

disadvantage such as the size of modular chiller set is usually wider than single chiller system. Available space in the plant room needs to be checked and considered accordingly to suit the system installation.

4. CONCLUSIONS

Experimental and numerical investigations have been conducted on the integration of heat pump and heat recovery system of a water cooled chiller system for hotel industry applications. The results showed that total annual energy consumption of integration system is significantly lower than the existing system comprises separate air conditioning and hot water supply systems. It was also found that by utilizing 30 m³ hot water storage, hot water demand of the hotel can be satisfied from heat recovery system without heat pump.

Environmental performance of the integration system is more favourable with CO₂ emissions reduction of 10%. The existing and integration systems are responsible for 2,093 and 1,906 tonCO₂/year respectively. With regards to the economic viability, the integration system can provide considerably low payback period of 2.61 years with cost saving more than 1.7 billion rupiahs (IDR) per year. This accounted for 34.4% reduction on energy cost of air conditioning and hot water supply systems.

ACKNOWLEDGMENTS

The authors acknowledge the financial support received from the Higher Education Directorate General of the Ministry of Research, Technology and Higher Education of the Republic of Indonesia.

REFERENCES

- [1] A. Sugiyono, Anindhita, M.S. Boedoyo, Adiarso. Indonesia Energy Outlook 2014, Center for Energy Resources Development Technology, Agency for the Assessment and Application of Technology, (2014) 103-105.
- [2] J. Respati. Prospects of Energy Efficiency and Conservation in Indonesia, Indonesian Energy Conservation and Efficiency Society, (2016) 22.
- [3] A. Sugiyono, Anindhita, M.S. Boedoyo, Adiarso. Indonesia Energy Outlook 2014, Center for Energy Resources Development Technology, Agency for the Assessment and Application of Technology, (2014) 11-13.
- [4] Ministry of ESDM, Statistics of New, Renewable Energy and Energy Conservation, (2015) 65
- [5] Biro Pusat Statistik: Selected indicators Social-Economic of Indonesia, Information on: <http://www.bps.go.id>, (2016).
- [6] D. Monfet, R. Zmeureanu. Ongoing commissioning of water-cooled electric chillers using benchmarking models, *Appl. Energy*, 92 (2012) 99-108.
- [7] I N. Suamir. Audit Energy Report - Chillers and AC System Performance of the Main and Tower Buildings of Mercure Convention Centre Ancol-Jakarta, (2014) 20-33.
- [8] J.C. Wang. A study on the energy performance of hotel buildings in Taiwan, *Energy and Buildings*, 49 (2012) 268-275.
- [9] S. Deng, J. Burnett. A study of energy performance of hotel buildings in Hong Kong, *Energy and Buildings*, 31 (2000) 7-12

- [10] Y. Xina, S. Lua, N. Zhua, W. Wu. Energy consumption quota of four and five star luxury hotel buildings in Hainan province China, *Energy and Buildings*, 45 (2012) 250-256
- [11] S. Onut, S. Soner. Energy efficiency assessment for the Antalya Region hotels in Turkey, *Energy and Buildings*, 38 (2006) 964-971
- [12] R. Priyadarsini, W. Xuchao, L.S. Eang. A study on energy performance of hotel buildings in Singapore, *Energy and Buildings*, 41 (2009) 1319-1324.
- [13] W. Xuchao, R. Priyadarsini, L.S. Eang. Benchmarking energy use and green house gas emissions in Singapore's hotel industry, *Energy Policy*, 38 (2010) 4520-4527.
- [14] AEE. Energy conservation of you need to know, available from <http://www.aeecenter.org>, (2014).
- [15] International Institute for Energy Conservation (IIEC). Energy Efficiency Guidelines for Hotels in the Pacific, (2015) 19-32
- [16] L. Barry, B.L. Mak, W.W. Chan, D. Li, L. Liu, K.F. Wong. Power consumption modeling and energy saving practices of hotel chillers, *Int. J. Hospitality Management*, 33 (2013) 1-5
- [17] F.W. Yu, K.T. Chan, R.K.Y. Sit. Climatic influence on the design and operation of chiller systems serving office buildings in a subtropical climate, *Energy and Buildings*, 55 (2012) 500-507.
- [18] A. Hepbasli, Y. Kalinci. Review of heat pump water heating systems. *Renewable and Sustainable Energy Reviews*, 13 (2009) 1211-1229.
- [19] J. Ji, T. Chow, G. Pei, J. Dong, W. He. Domestic air-conditioner and integrated water heater for subtropical climate. *Appl. Therm. Eng.*, 23 (2003) 581-592.
- [20] EES. Engineering equations solver. www.fChart.com, (2014).
- [21] ASHRAE. ASHRAE handbook of refrigeration. ASHRAE Inc., Atlanta, (2010) 749.
- [22] BS EN 378-1. Refrigerating systems and heat pumps - Safety and environmental requirements: Basic requirements, definitions, classification and selection criteria. BSI, UK, (2008) 68 p.
- [23] ASHRAE Standard 34. Designation and safety classification of refrigerants. ASHRAE Inc., Atlanta, (2007).
- [24] IPCC. Safeguarding the ozone layer and the global climate system. UN-Intergovernmental Panel on Climate Change. 478 p. Available from: [http:// arch.rivm.nl/env/int/ipcc/pages_media/SROC-final/SpecialReportSROC.html](http://arch.rivm.nl/env/int/ipcc/pages_media/SROC-final/SpecialReportSROC.html), (2005).

Updates on ASL Publication for IJCST 2016

1 message

admin bisstech <bisstech2016@gmail.com>
To: Undisclosed recipients <rosida_vn@yahoo.com>
Bcc: nyomansuamir@pnb.ac.id

Mon, Jan 29, 2018 at 12:54 PM

Dear Authors,

Thank you very much for your patience to wait for the publication of IJCST 2016 in ASL Journal. We have an update news regarding the publication.

Your manuscripts are almost ready to be published, we have already received the volume and edition numbers, which are: Volume 23, Number 12 December 2017. ISSN is 1936-6612 and EISSN is 1936-7317. Screenshot of publication cover is attached.

However, kindly note that to ensure a high-quality publication, ASL still requires several manuscripts to be revised, for minor corrections. We have already sent separate notification e-mails to authors who are required to submit the revisions within a very tight deadline. We strongly hope that the revisions are made before meeting the deadline so that the publication will continue without further delay.

Thank you very much for your patience and we apologize for this inconvenient delay.

IJCST 2016 Committee



ProofIJCST2016_ASL_Publication.jpg
121K

Updates on ASL Publication for IJCST 2016 (Published Manuscripts)

1 message

admin bisstech <bisstech2016@gmail.com>
To: Undisclosed recipients <bisstech2016@gmail.com>
Bcc: nyomansuamir@pnb.ac.id

Wed, Feb 21, 2018 at 4:41 PM

Dear Authors,

We have good news for you. Your manuscripts have been published in ASL, Volume 23, Number 12, December 2017. Please find the link here:

<http://www.aspbs.com/science/contents-science2017.htm>

We would like to express our deepest gratitude for your patience in waiting for the publication of IJCST 2016. Also, we would like to apologize for the inconvenience caused by the long process throughout the whole journey of this publication.

Once again, thank you very much for your trust in the IJCST 2016 Committee, we really do appreciate it. We hope for the best for your future career and endeavor.

Best Regards,
IJCST 2016 Committee